

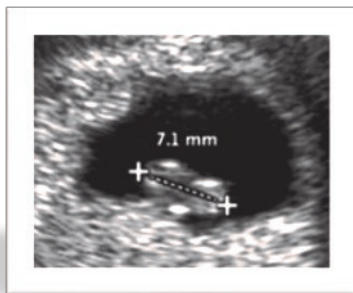


ULTRASOUND SERVICES

Prenatal fetal imaging using ultrasound scanning has become an integral part of antenatal care for all pregnant women. As an accredited specialist in Fetal Medicine, Dr. Colin Walsh is an expert in obstetric ultrasound and has personally performed more than 3,500 scans in high-risk pregnancies. At **SHORE FOR WOMEN** we use only the latest GE 4D ultrasound technology and can advise you on the recommended schedule of ultrasound scans to suit your pregnancy.

1ST TRIMESTER DATING SCAN

- Ideally performed 7-11 weeks



- Confirms your due date
- Excludes ectopic pregnancy
- Identifies twin pregnancies

NUCHAL TRANSLUCENCY (NT)

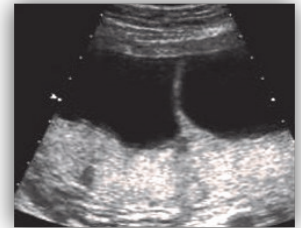
Performed at 11-14 weeks



Screening test for Down syndrome and other chromosomal disorders

TWIN PREGNANCIES

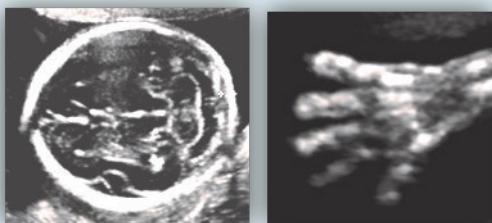
- Twins need regular scans



- Number of placentas (chorionicity) determines the ideal schedule of scans

MORPHOLOGY SCAN

The most important ultrasound scan
 A complete fetal anatomical survey is usually performed at 18-20 weeks
 A limited morphology scan can be performed at 12-16 weeks

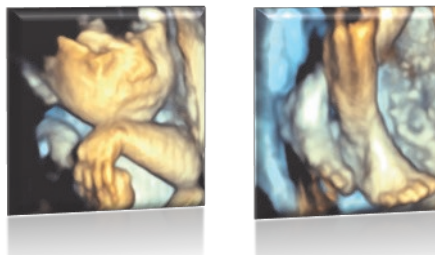


- * Can usually determine fetal gender
- * A good time for baby photos!

FETAL ECHOCARDIOGRAM

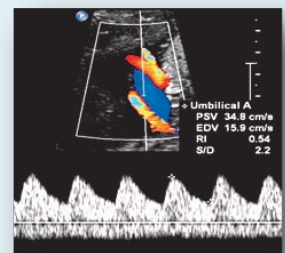
- ◆ Detailed fetal heart scan
- ◆ Not usually required – only recommended for certain high-risk women
- ◆ Performed at 22-24 weeks
- ◆ Dr. Colin Walsh is experienced at fetal ECHO and has published widely on this concept

3D/4D FETAL SCANS



FETAL GROWTH SCAN

Performed at 22+ weeks
 Fetal size is combined with Doppler blood flow studies



Needed regularly for fetal growth abnormalities, high blood pressure or diabetes

We are also experienced in **cervical length scans** - these trans-vaginal (internal) scans are offered at regular intervals between 16-24 weeks to women at particularly high risk for preterm delivery.

SHORE FOR WOMEN offers the full range of ultrasound services in pregnancy. Unlike other practices, our Fetal Medicine specialist does not simply report on someone else's images - all scans at **SHORE FOR WOMEN** are performed by Dr. Colin Walsh, who will discuss the results with you immediately.